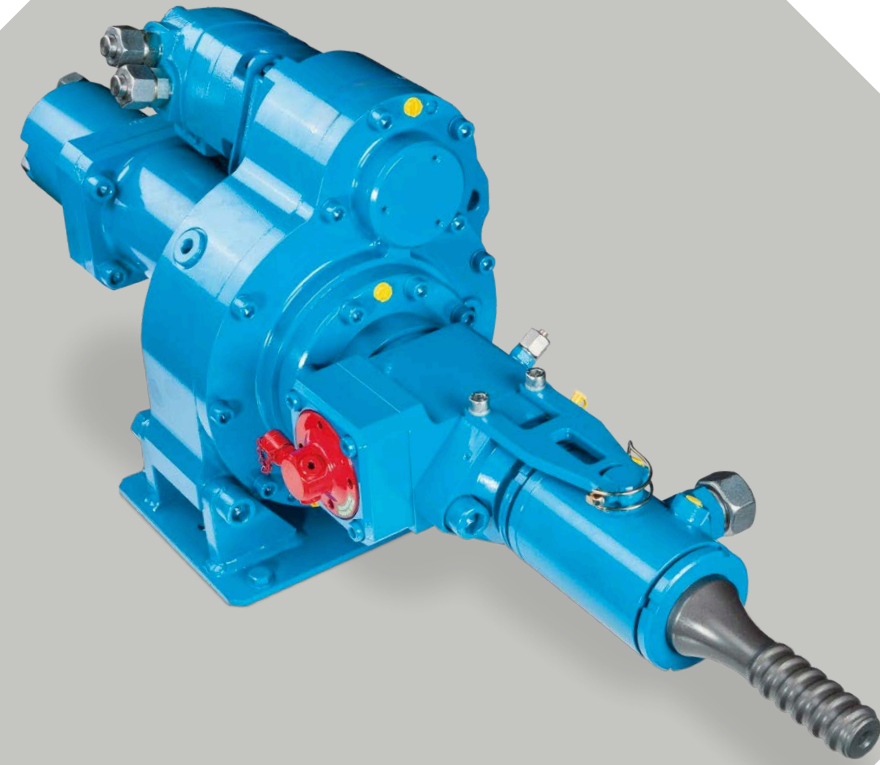


terra  
infrastructure

safety: efficient and sustainable



DRIFTER  
HB15

# Drifter HB15

HB15 is a small-size Drifter (top-hammer) especially developed for:

- Micropile drilling up to a casing diameter of 3 inch (ø76,2 mm)
- Threaded hollow bar drilling (self-drilling anchors) up to a bar diameter of 2 inch (ø52 mm)

HB15 has a standard built-in hydraulic damping mechanism to avoid blank impacts and to allow percussion during retraction of casings.

HB15 achieves an optimal drilling performance in different types of soil by exchanging the percussion unit, from 50 Hz to 60 Hz and vice versa.

HB15 offers 4 different motors (110 ccm, 160 ccm, 245 ccm, 310 ccm).

## Percussion Unit

Operating pressure	170 - 190 bar
Oil flow rate	70 - 80 l/min
Impact rate	(50 Hz) 3.000 min <sup>-1</sup>
Single impact energy	270 Nm

## Shank Adaptors (Striker Bars)

Male thread	R32 left   R38 left   T38 left   T45 left R55(H55) right   R55(H55) left
Female thread	R32 left   R38 left   T38 left Titan 30/11 left   40/16 left

### OPTIONS

- External flushing head for casings and self-drilling hollow bars
- Integrated flushing through extended shank adaptor (striker bar)
- Drifter version without damping mechanism available
- Possible motor positions: on the left side or on top (right side position is not possible)

## Rotary Drives

### Motor-Version HP110 ccm

Pressure at rotary drive		140 bar				170 bar				200 bar				240 bar				
Gear					1 <sup>st</sup>					1 <sup>st</sup>				1 <sup>st</sup>				1 <sup>st</sup>
Oil flow rate (lpm)	50	Torque (Nm)			680					850				1.000				1.200
		Speed (rpm)			143					138				131				139
	75	Torque (Nm)			680					850				1.000				1.200
		Speed (rpm)			208					213				191				181
	95	Torque (Nm)			680					830				1.000				1.200
		Speed (rpm)			255					248				240				228

■ Intermittend mode (max. 10% per minute)

### Motor-Version HP160 ccm

Pressure at rotary drive		140 bar				170 bar				200 bar				240 bar				
Gear					1 <sup>st</sup>					1 <sup>st</sup>				1 <sup>st</sup>				1 <sup>st</sup>
Oil flow rate (lpm)	50	Torque (Nm)			1.000					1.300				1.500				1.800
		Speed (rpm)			95					92				88				83
	75	Torque (Nm)			1.000					1.300				1.500				1.800
		Speed (rpm)			138					134				130				124
	95	Torque (Nm)			1.000					1.300				1.500				1.800
		Speed (rpm)			173					169				164				157

■ Intermittend mode (max. 10% per minute)

### Motor-Version HP245 ccm

Pressure at rotary drive		100 bar				140 bar				170 bar				200 bar				
Gear					1 <sup>st</sup>					1 <sup>st</sup>				1 <sup>st</sup>				1 <sup>st</sup>
Oil flow rate (lpm)	50	Torque (Nm)			1.100					1.500				1.900				2.300
		Speed (rpm)			65					63				61				58
	75	Torque (Nm)			1.100					1.500				1.900				
		Speed (rpm)			94					91				88				
	95	Torque (Nm)			1.100					1.500				1.900				
		Speed (rpm)			118					115				112				

■ Intermittend mode (max. 10% per minute)

### Motor-Version HP310 ccm

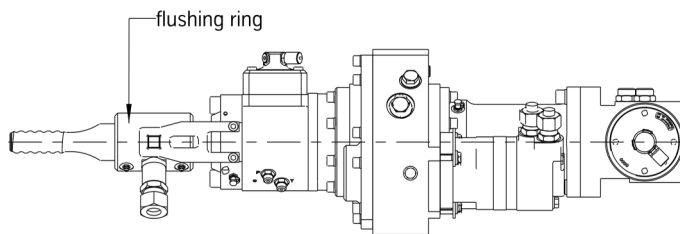
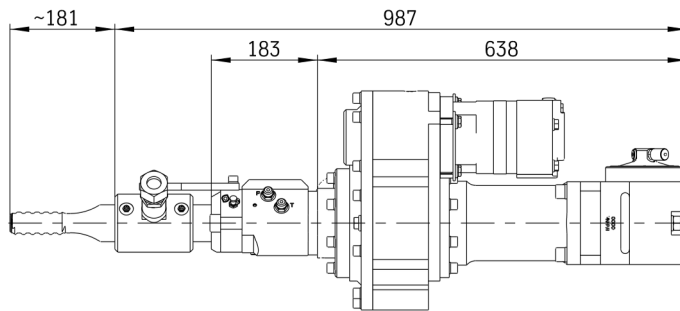
Pressure at rotary drive		70 bar				100 bar				140 bar				170 bar				
Gear					1 <sup>st</sup>					1 <sup>st</sup>				1 <sup>st</sup>				1 <sup>st</sup>
Oil flow rate (lpm)	50	Torque (Nm)			900					1.400				1.950				2.450
		Speed (rpm)			53					52				51				50
	75	Torque (Nm)			900					1.400				1.950				
		Speed (rpm)			75					74				73				
	95	Torque (Nm)			900					1.400				1.900				
		Speed (rpm)			94					93				92				

■ Intermittend mode (max. 10% per minute)

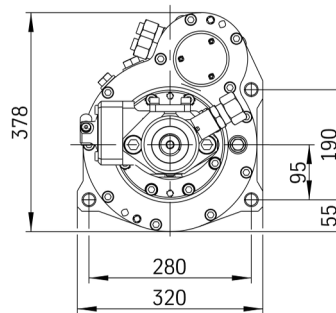
## Dimensions

### for Anchor-Drilling

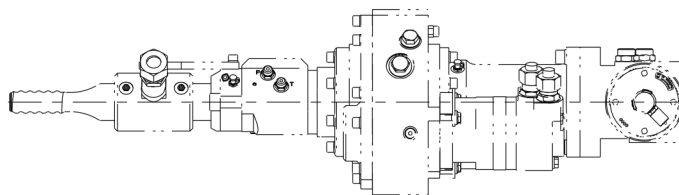
with hydraulic damping mechanism and external flushing ring  
fitted to extended shank adaptor (swivel)

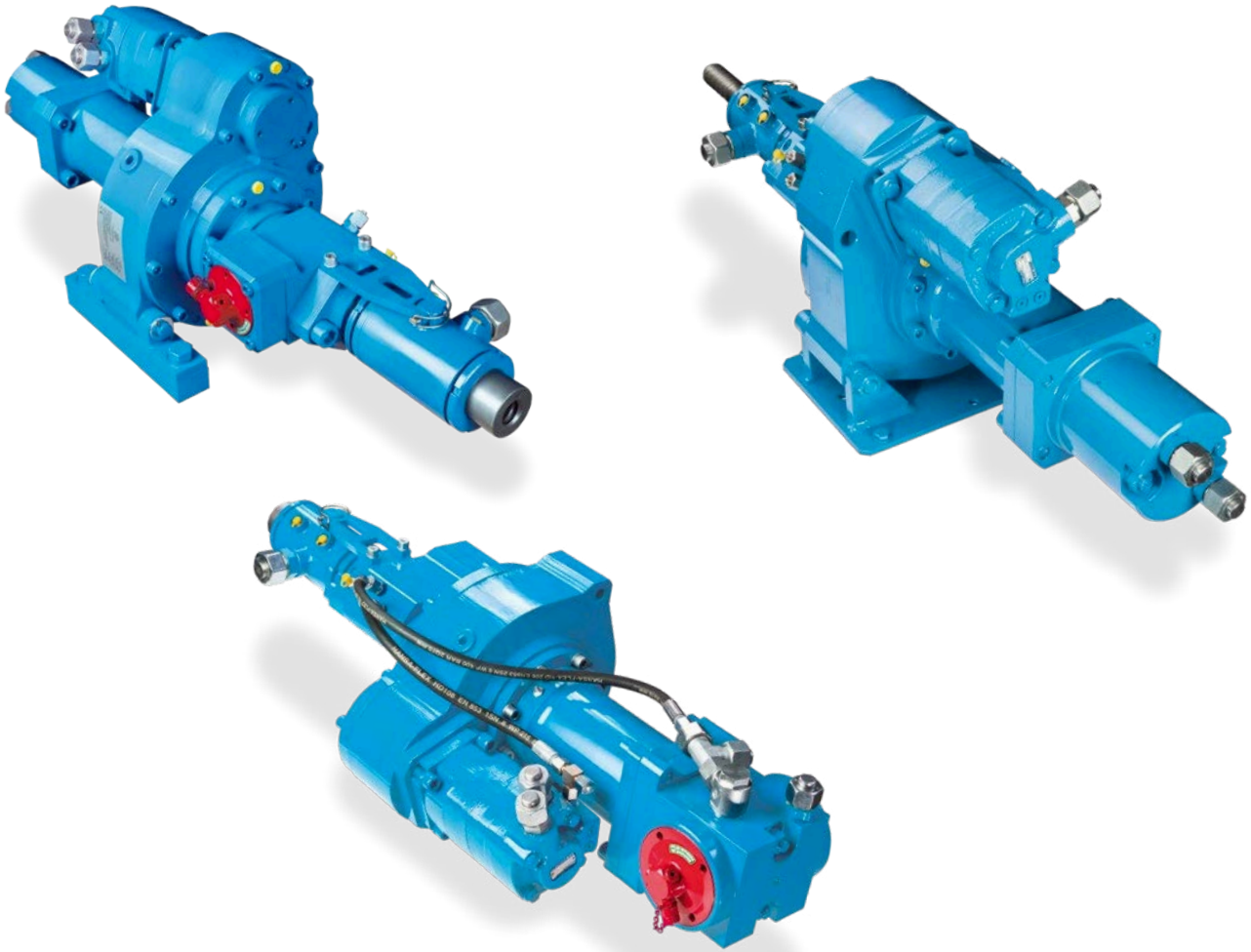


weight approx. 200 kg  
retraction force max. 36 kN



motor on top





HB15 drilling in a quarry



HB15 drilling  $\varnothing 101$  mm (4 inch) casings

terra infrastructure GmbH, Alte Liederbacher Straße 6, 36304 Alsfeld, Germany  
P: +49 6631 781-0  
sales.drilling@terra-infrastructure.com | www.terra-infrastructure.com

**Australia**

terra infrastructure Pty Ltd, 11 Woodford Pl, Thornton NSW 2322, Australia  
P: +61 2 8448-3555  
info.anz@terra-infrastructure.com  
www.terra-infrastructure.com.au

**New Zealand, Pacific Islands**

terra infrastructure Pty Ltd, 180 Fred Taylor Drive, Whenuapai Auckland 0814, New Zealand  
P: +64 9 416-8891  
info.anz@terra-infrastructure.com  
www.terra-infrastructure.co.nz

**Baltic States**

terra infrastructure UAB, Liepų g. 83, 93269 Klaipėda, Lithuania  
P: +370 46 355-401  
www.terra-infrastructure.com/lt



terra  
infrastructure