



Dimensions L 2200 x L 6440 x H 2340



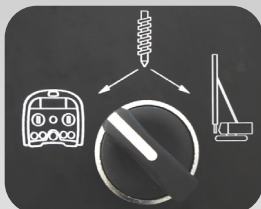
Side tube specially designed for best conveyance and cleaning of concrete



Frame and structure completely made of solid and rigid steel. Fully hydraulic tracked traction, with steel chain, allowing access to the most difficult terrains.



Remote control



SEBHSA
BD-4147.OR



Personnalisable



Engine: Diesel

225 kW



Max. Flow

~ 183 yd³/h



Max. Pressure

~ 1015 psi



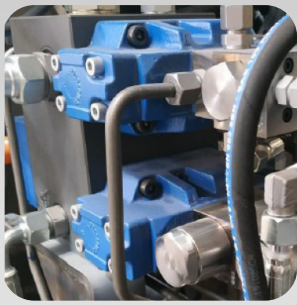
Cylinders

230 Ø x 1800 mm

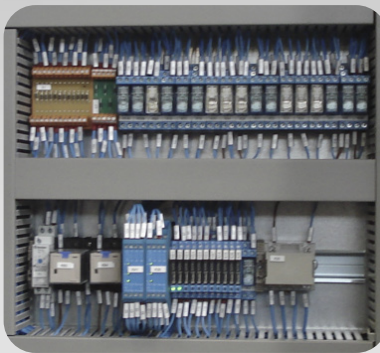


Developed in answer to the need for ever bigger and deeper drilled shafts, caissons and bored piles, required for example for bridges, skyscraper and other large structures:

- Suitable for deployment on projects with the toughest conditions of terrain or weather.
- Biggest pumping capacity packed in a compact frame to improve flexibility, transportability and reduce transport cost.
- Economical fuel consumption and reduced emission through its targeted engine configuration.
- Cost efficient by virtue of being tailor-made and accessorised to the individual customer requirements.



Independent double hydraulic circuit system, each circuit individually powers the pumping cylinders and the swivel S-tube enriched by an accumulator that eliminates water hammer for smoother pumping.



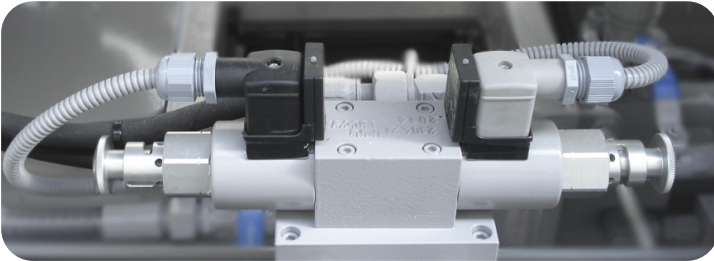
Simple electric set



Automatic greasing system



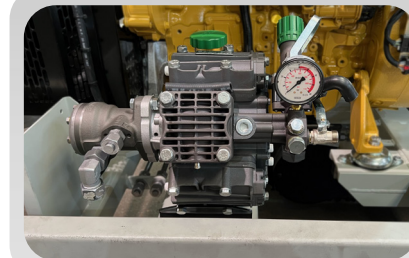
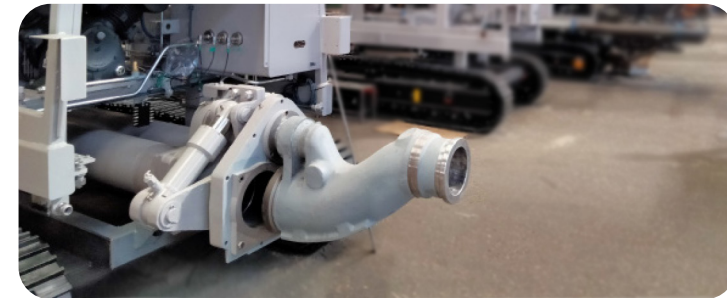
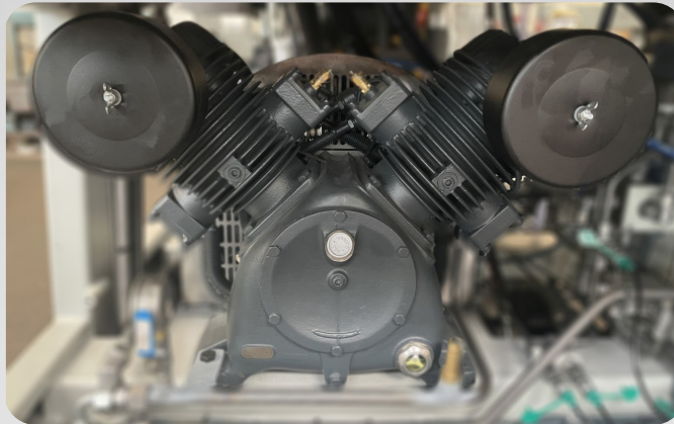
Pumping set designed for high pressure



Enhanced steel wearplates to reduce wear and tear.



High pressure with high-output air compressor 1100 L / min Driven directly by a hydraulic engine



75 L / 75 bar diaphragm water pump compatible with all types of water

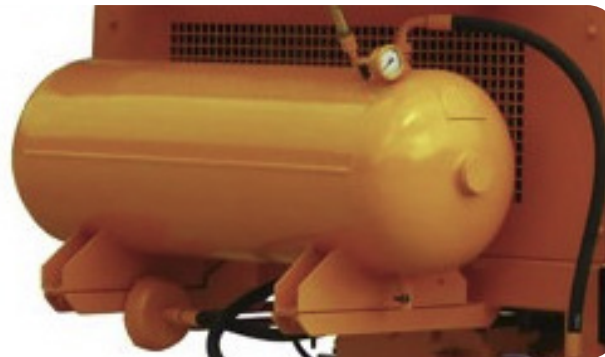
Customised water tank with internal water-effect epoxy painting to prevent oxidation.



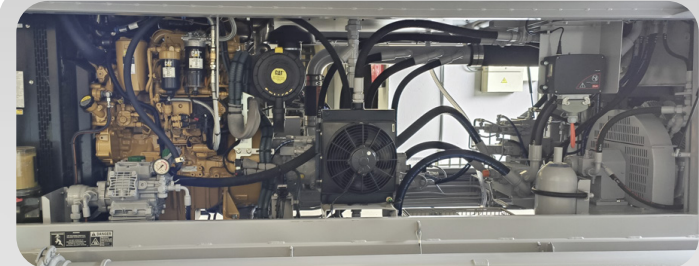
780 L



150 L



100L compressed air tank at 15 bar, that loads in 3 minutes to give a boost of pressure to the Air compressor allowing fast & effective cleaning.



Hydraulic cooling system with auto-activation at 50° and Safety system triggering at 80°