



**Dimensions** L 1900 x L 5580 x H 2340



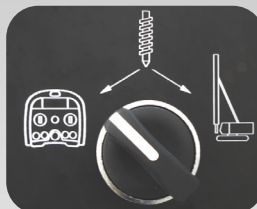
**Side tube specially designed for best conveyance and cleaning of concrete**



**Frame and structure completely made of solid and rigid steel. Fully hydraulic tracked traction, with steel chain, allowing access to the most difficult terrains.**



**Remote control**



**Personnalisable**

**SEBHSA  
BD-3117.OR**



**Engine: Diesel 140 kW**



**Max. Flow ~ 137 yd<sup>3</sup>/h**



**Max. Pressure ~ 1015 psi**



**Cylinders 200 Ø x 1600 mm**

Perfectly configured to achieve maximum productivity from its highly efficient, low emission engine, the SEBHSA BD-3117.OR impresses with performance:

- Optimised configuration for the whole range of deep foundation and ground improvement tasks.
- Highly economical through low running and maintenance cost and efficient performance.
- Robust and almost unstoppable through the use of only best materials and parts.
- Tailor-made and accessorised to the specific needs of each individual customer.





Independent double hydraulic circuit system, each circuit individually powers the pumping cylinders and the swivel S-tube enriched by an accumulator that eliminates water hammer for smoother pumping.



Simple electric set

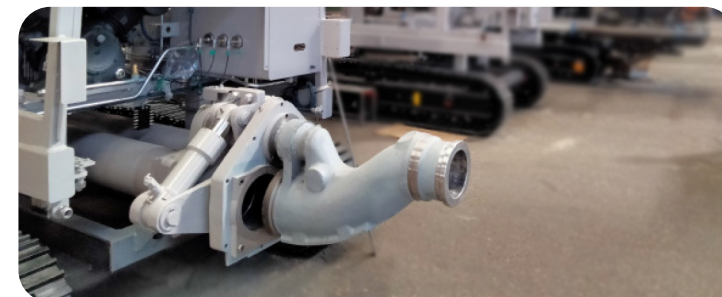
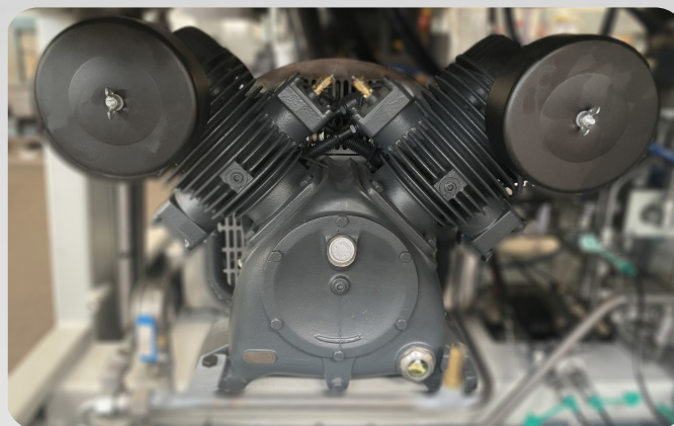


Automatic greasing system

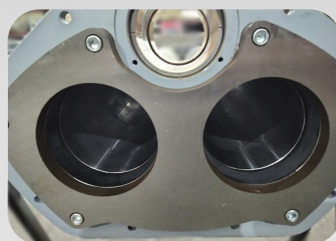
Pumping set designed for high pressure



High pressure with high-output air compressor 1100 L / min Driven directly by a hydraulic engine



Enhanced steel wearplates to reduce wear and tear.



Customised water tank with internal water-effect epoxy painting to prevent oxidation.



780 L

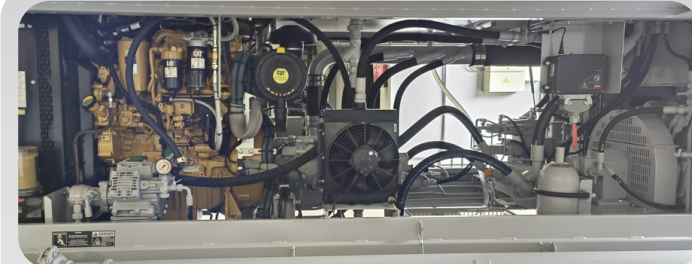
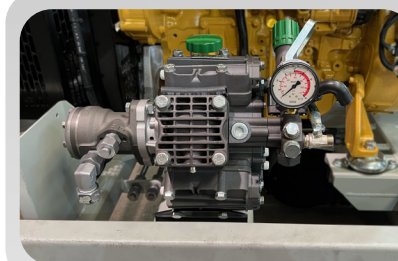


150 L



100L compressed air tank at 15 bar, that loads in 3 minutes to give a boost of pressure to the Air compressor allowing fast & effective cleaning.

75 L / 75 bar diaphragm water pump compatible with all types of water



Hydraulic cooling system with auto-activation at 50° and Safety system triggering at 80°