



**Dimensions** L 1650 x L 4560 x H 2340



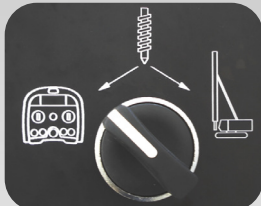
**Side tube specially designed for best conveyance and cleaning of concrete**



**Frame and structure completely made of solid and rigid steel. Fully hydraulic tracked traction, with steel chain, allowing access to the most difficult terrains.**



**Remote control**



**Personnalisable**

**SEBHSA  
BD-2806.OR**



**Engine: Diesel 100 kW**



**Max. Flow ~ 104 yd³/h**



**Max. Pressure ~ 870 psi**



**Cylinders 180 Ø x 1400 mm**



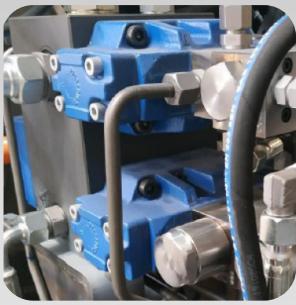
**First choice for ground improvement and any standard size auger-cast or displacement piles the SEBHSA BD-2806.OR has the power for even bigger jobs:**

- Equipped and accessorised for CFA and other ground improvement requirements, as well as Shotcrete.
- Hard wearing and reliable through the use of best materials and components.
- Cost effective by virtue of its longevity and low maintenance cost.
- Specially designed to work alongside the drill rig, it improves production efficiency and productivity.

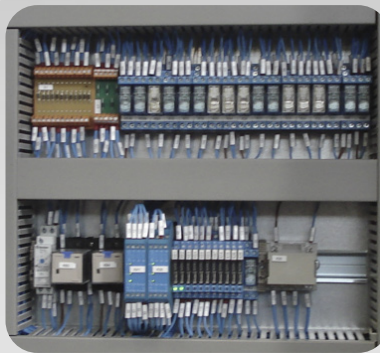


Designed by Layl





Independent double hydraulic circuit system, each circuit individually powers the pumping cylinders and the swivel S-tube enriched by an accumulator that eliminates water hammer for smoother pumping.



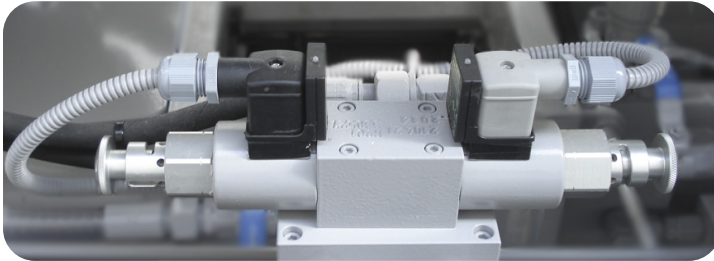
Simple electric set



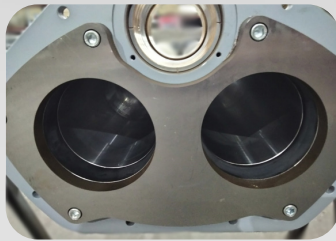
Automatic greasing system



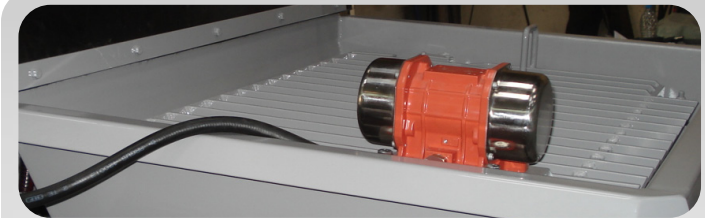
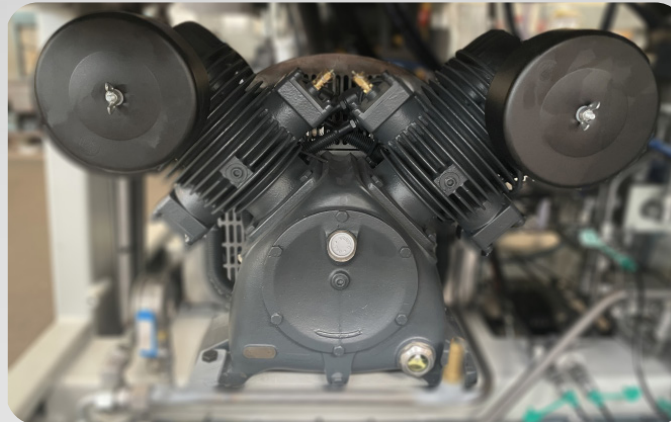
Pumping set designed for high pressure



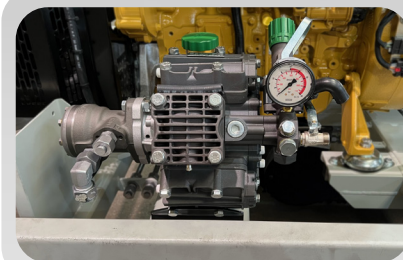
Enhanced steel wearplates to reduce wear and tear.



High pressure with high-output air compressor 1100 L / min Driven directly by a hydraulic engine



Equipped for Shotcrete



75 L / 75 bar diaphragm water pump compatible with all types of water

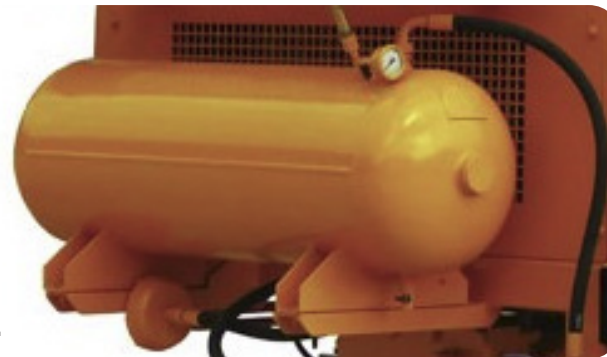
Customised water tank with internal water-effect epoxy painting to prevent oxidation.



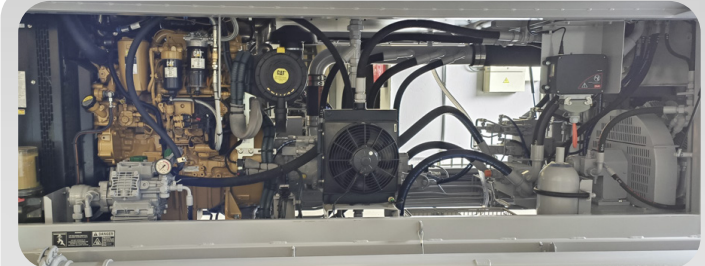
510 L



100 L



100L compressed air tank at 15 bar, that loads in 3 minutes to give a boost of pressure to the Air compressor allowing fast & effective cleaning.



Hydraulic cooling system with auto-activation at 50° and Safety system triggering at 80°