

MARINI

QUARRIES GROUP

MR - P 350



PERFORATRICE IDRAULICA PER PALI
HYDRAULIC PILING RIG

MR
NEW ERA OF DRILLING MACHINES

MR - P Line

IT

La MR-P 350 è una macchina da perforazione cingolata per l'esecuzione di pali trivellati con systema Kelly Bar. Le dimensioni compatte e la notevole potenza della MR-P 350 permettono di realizzare pali fino a 1200 mm (47.2 in) di diametro con profondità max. di 18 m (59 ft).

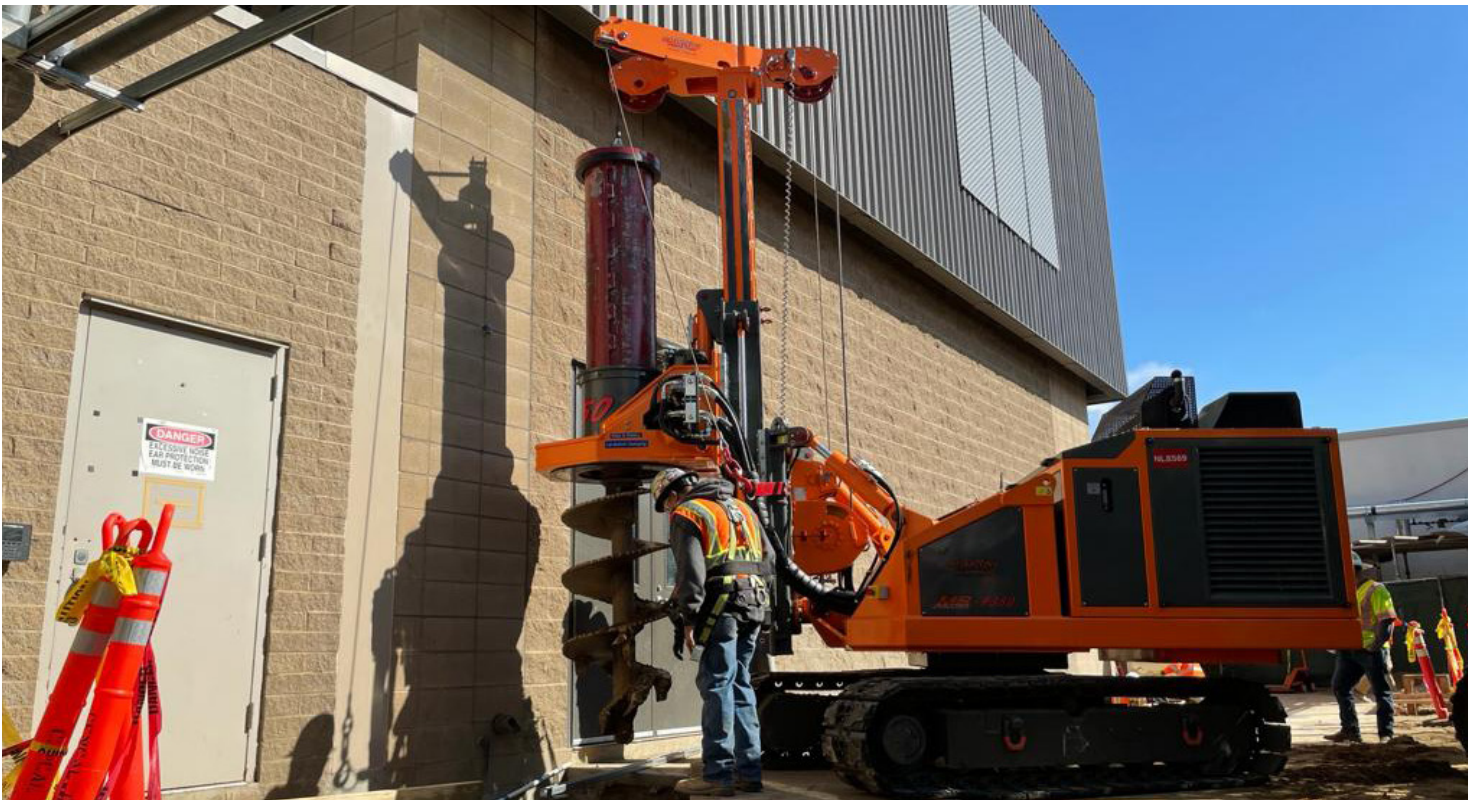
L'innovativo sistema di controllo remoto con radiocomando interattivo, incrementano sicurezza, performance e facilità d'uso.

Adatta principalmente a lavori in cantieri con accesso limitato oppure LHR (Low Head Room) grazie al mast telescopico che permette una maggiore flessibilità di posizionamento e alla centrale idraulica separabile fino a distanza di 30 m.

ENG

The MR-P 350 is a crawler piling rig designed for all bored piles application with Kelly Bar system. The compact dimensions and the considerable power of the MR-P 350 allow to drill piles up to 1200 mm (47.2 in) in diameter with max. depth of 18 m (59 ft).

The innovative control system with interactive remote control increases safety, performance and ease of use. Mainly suitable for construction sites with limited access or LHR (Low Head Room) thanks to the telescopic mast which allows greater positioning flexibility and the separable hydraulic power pack up to a distance of 30 m.

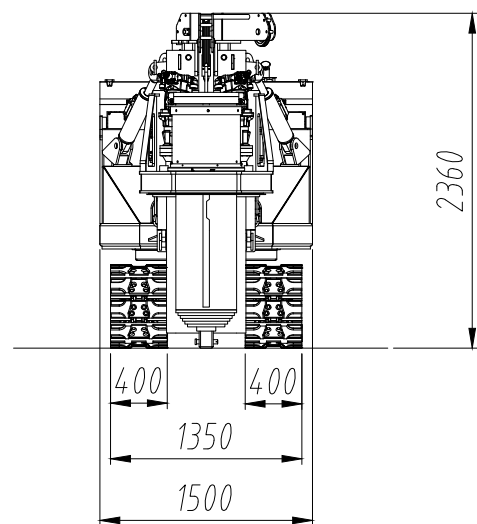
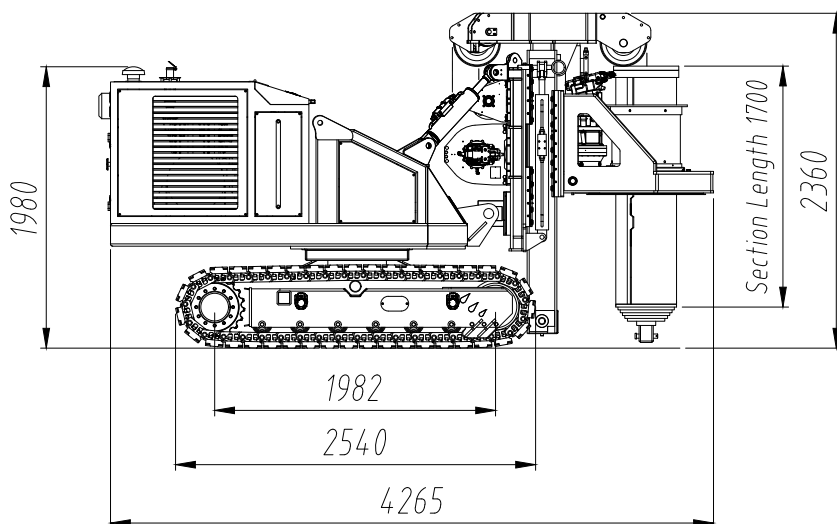


MR - P 350



Dati Tecnici- Technical Data

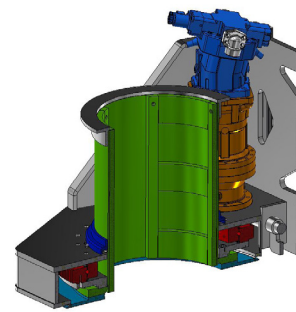
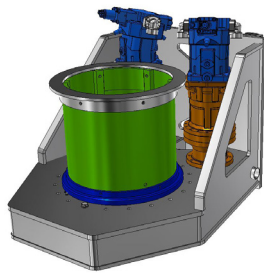
Carro Cingolato Undercarriage		
Passo cingolo Wheel base	1982 mm / 6.50 ft	
Careggiata variabile Variable track	1350 - 1850 mm (4.43- 6.07 ft)	
Larghezza soles Pad width	400 mm / 1.31 ft	
Pendenza max. Max. climbing ability	80%	
Velocità max. Max. speed	2.5 Km/h (15.5 mph)	
Velocità rotazione torretta Tower rotation speed	5 rpm	
Centrale idraulica Power Pack		
Motore Diesel Diesel Engine	KOHLER KDI 2504 TCR	
Potenza motore Engine Power	55kW (75 Hp) @2600 rpm	
Pompa principale Main pump	160 lpm @ 250 bar (42.3 gpm @3771 psi)	
Serbatoio olio Oil tank	200 Litri / 52.8 gal	
Serbatoio Gasolio Fuel Tank	100 Litri /28 gal	
Consumo carburante Fuel consumption	5 l/h (1.33 gal/h)	
Raffreddamento Cooling	Scambiatore aria olio separato - Separate oil air exchanger	
Argano idraulico Hydraulic winch	Principale / Main	Servizio / Service
Tiro max. Max. pull	3000 daN / 6600 lb	1000 daN / 2200 lb
Radiocomando Remote control		
Standard	Radiocomando Standard / Standard remote control	
Tech (optional)	Radiocomando con schermo dati / Remote control with data display	



Peso totale unità / Machine total weight / Gesamtgewicht der Einheit / Poids total de l'unité ~9000 kg (19850 lbs)

Opzioni ed Accessori- Options and Accessories- Options et Accessoires- Optionen und Zubehör

Teste di rotazione Rotary head	Tête de rotation Drehkopf	R- 27	R- 35
Coppia max. Max. torque	Couple max. Drehmoment max.	2700 daNm (19915 lbft)	3500 daNm (25815 lbft)
Velocità di perforazione Drilling speed	Vitesse de forage Bohrgeschwindigkeit	0/30 rpm	0/45 rpm
Velocità di scarico Spin-off speed	Vitesse de déchargement Entladegeschwindigkeit	70 rpm	70 rpm
Corsa testa Rotary head stroke	Course de tête rotative Drehkopfhub	700 mm / 2.29 ft	700 mm / 2.29 ft
Forza di spinta max. Max. Feed force	Poussée max. Vorschubkraft	9000 daN / 20234 lbf	
Forza di tiro max. Max. Retract force	Traction max. Rückzugskraft	6000 daN / 13489 lbf	

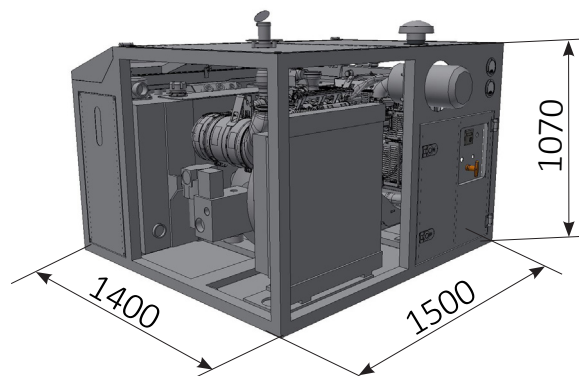


Parametri di perforazione / Drilling parameters / Paramètres de forage / Bohrparameter

Parametri di Perforazione Drilling parameters	Paramètres de forage Bohrparameter	
Diametro Max Max. diameter	Diamètre max Durchmesser max	1200 mm / 47.2 in
Diametro Min Min. diameter	Diamètre min Durchmesser min	500 mm / 19.6 in
Profondità Max Max. dept	Profondeur max Tiefe max	18 mt / 59 ft

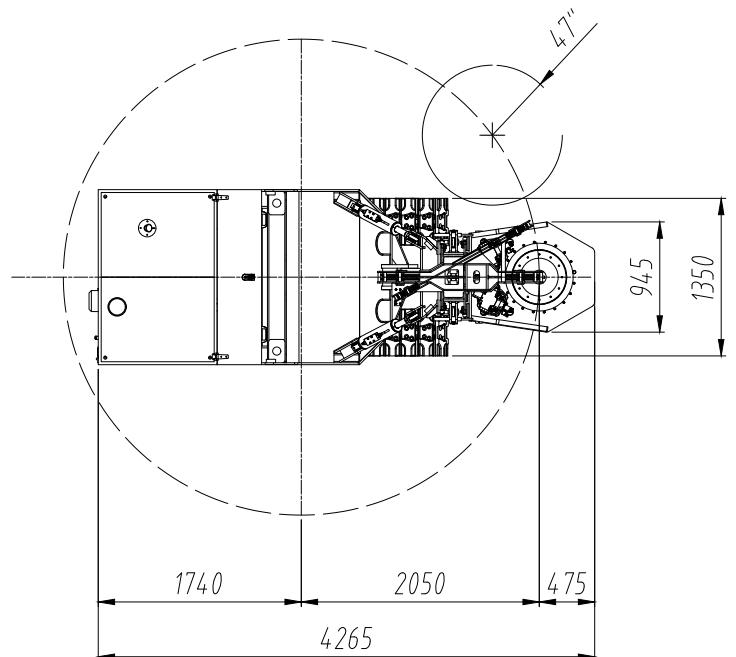
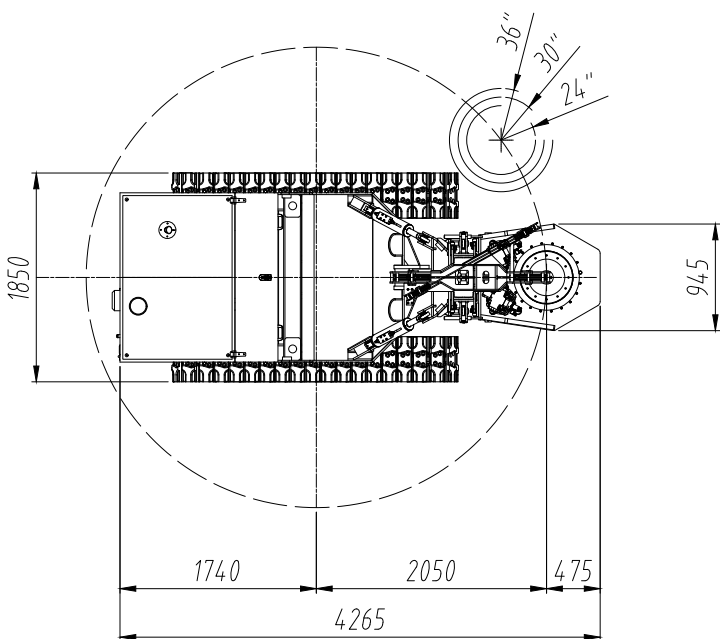
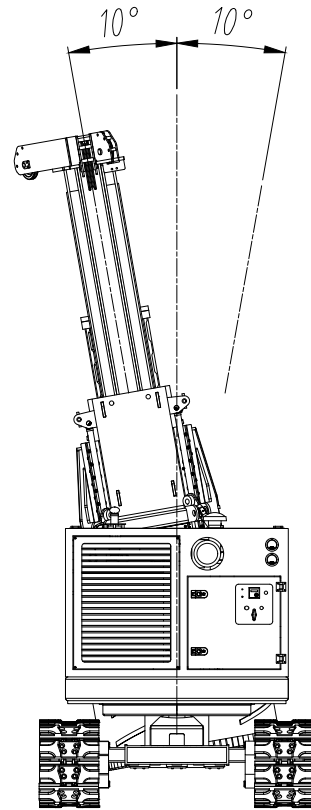
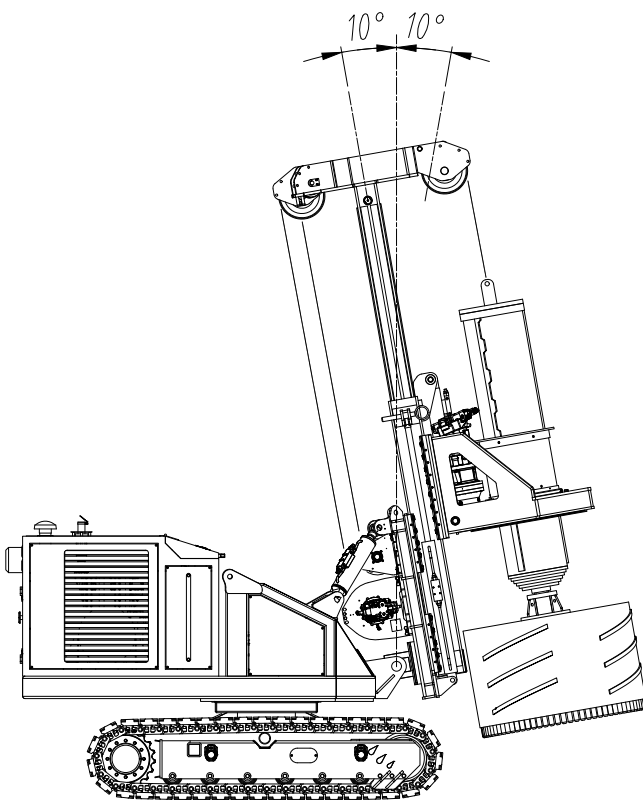
Centrale separabile / Separable power-pack / Central séparable / Zentral trennbar

Centrale idraulica separabile Separable hydraulic Power-Pack	Central séparable Zentral trennbar	Optional
Rimozione Removal	Enlèvement Entfernung	Sollevamento / Lifting
Max. distanza Distance max.	Distance max. Entfernung max.	30 mt / 98.33 ft
Peso Weight	Poids Gewicht	1500 kg (3300 lbs)



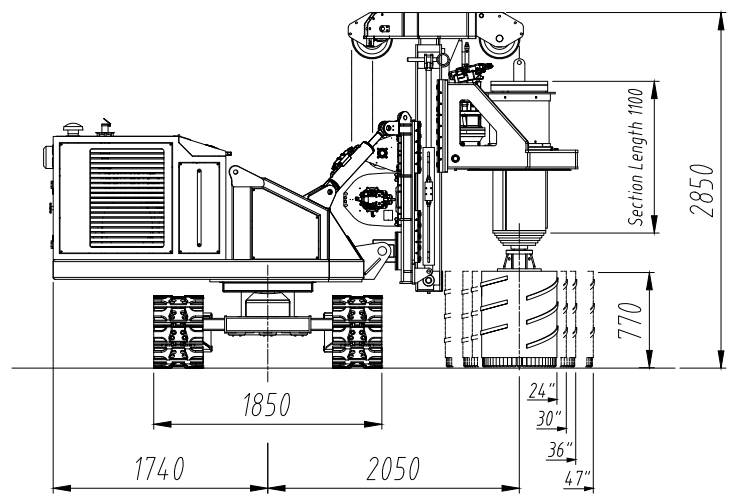
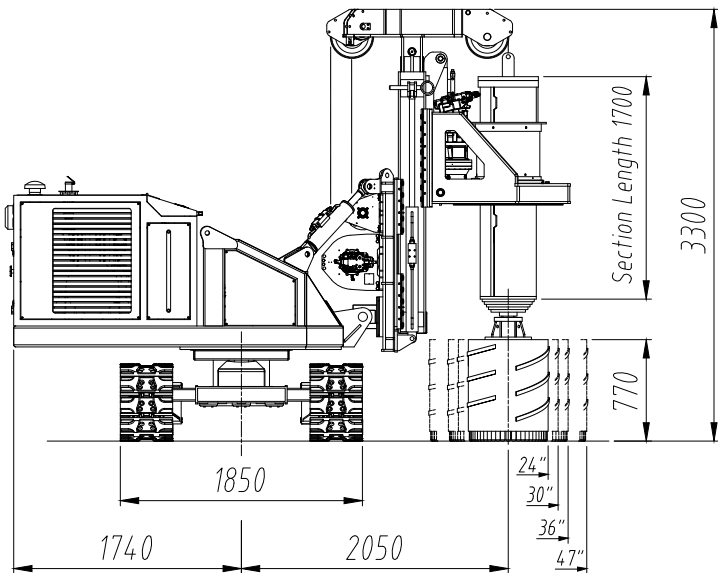
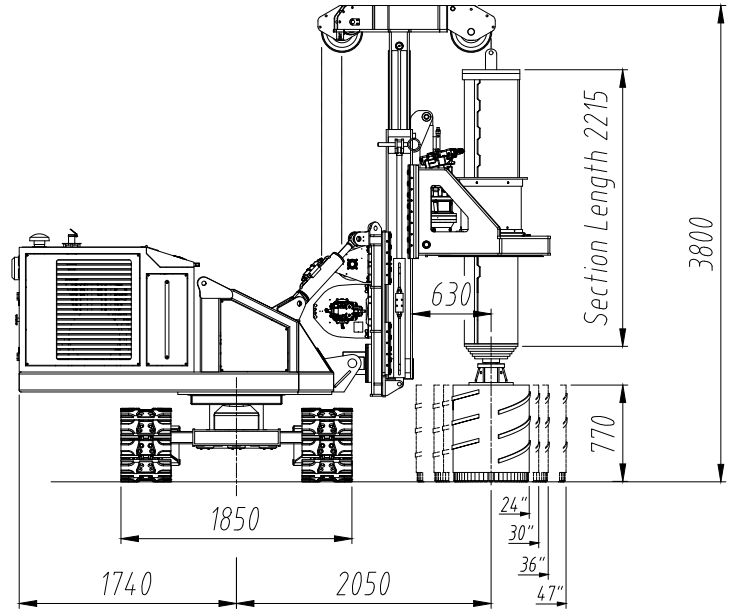
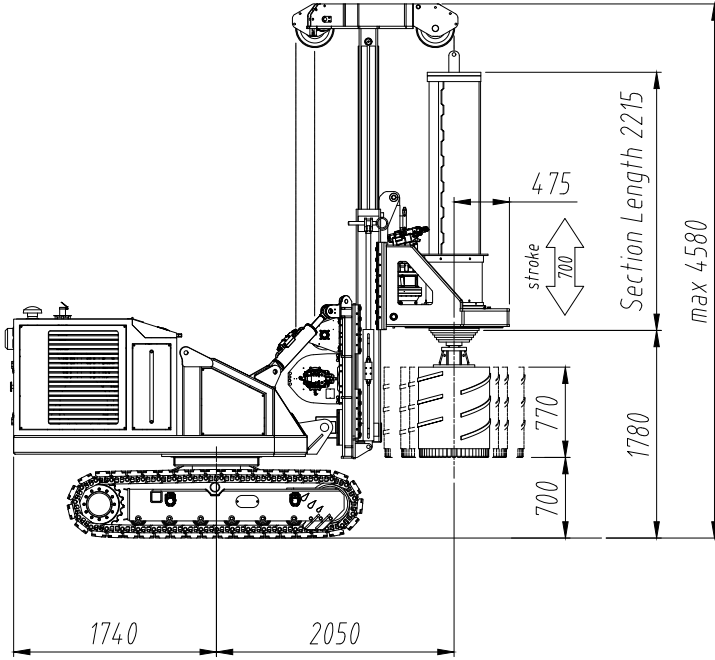
MR - P 350

Condizioni di lavoro - Working conditions - Conditions de travail - Arbeitsbedingungen



MR - P 350

Condizioni di lavoro - Working conditions - Conditions de travail - Arbeitsbedingungen



MARINI[®]

QUARRIES GROUP

... working to grow together...

MARINI QUARRIES GROUP S.R.L.

Via Beura 44-28844 Villadossola (VB)-ITALY

Tel. +39 0324 575106 Fax. +39 0324 54096

Web site www.mariniqg.it

email: mariniqg@mariniqg.it

