



INTERNATIONAL  
**DRILLING**  
EQUIPMENT, INC.



Rotary  
Drilling  
**Tools**

## TREMIE PIPES

**Tremie pipes** are normally used to pour concrete as it is drilled, after the steel cage reinforcement is placed in operation, to avoid concrete pile breakage or gaps.

During the operation they are lowered inside and through the steel cage reinforcement to protect concrete from soil contaminated water filtering and to avoid any possible concrete quality corruption.

IDE tremie pipes are made of quality drawn steel plates in order to guarantee high resistance elements.

Pipes sections can be connected by two kinds of coupling systems: threaded joints and wire cable joints.

While threaded tremie pipe are equipped with male/female joints with thread, the wire cable system is designed for quick assembly /dismounting of the various pipe sections during the concreting operations.

Using wire cable joints, water and mud penetration is prevented by oring seals applied in between male and female joints.

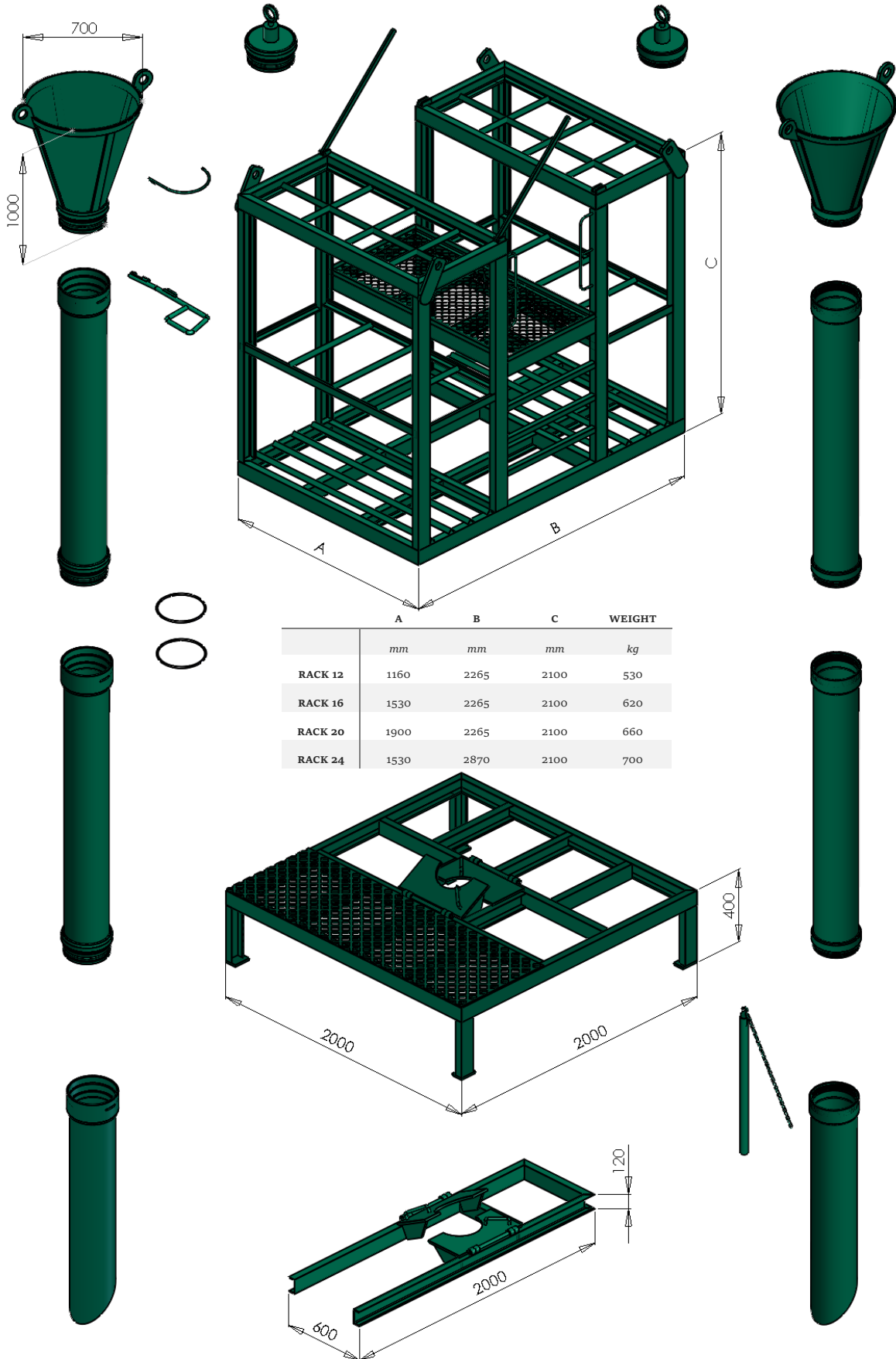
Tremie pipes assembly is provided with a set of accessories such as:

- Funnel: to pour concrete through the tremie pipe;
- Lifting swivel: to help the lifting and lowering operations;
- Chain spanner: for tightening and unscrewing of threaded joints ;
- Fork spanner for wire release system;
- Anti-slip platform equipped with a pipe clamping system to prevent pipes from falling into the holes;
- Container rack: to stock pipes and to ease the moving from one jobsite to another.

# Tremie Pipes and Accessories

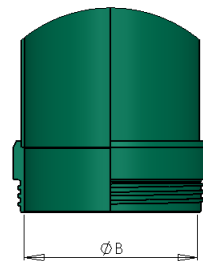
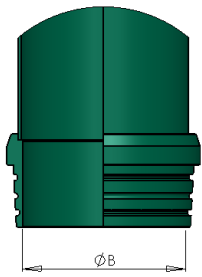
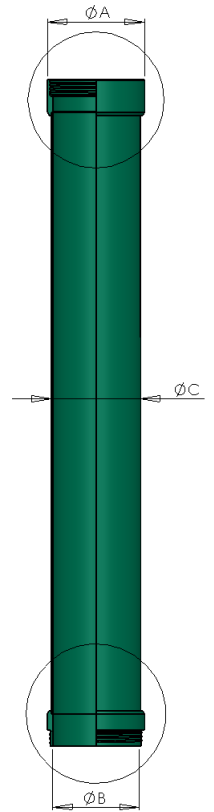
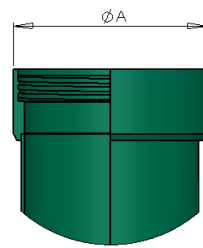
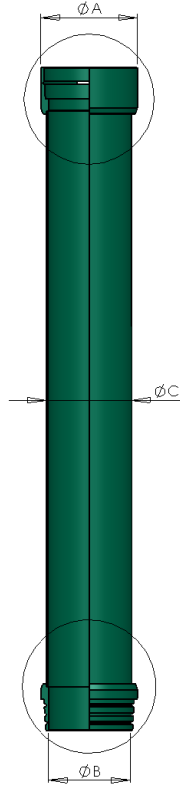
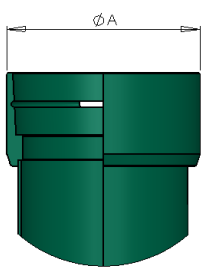
## WITH WIRE CABLES

## THREADED



## TREMIE WITH WIRE CABLES

## THREADED TREMIE PIPES



**ØA  
Tremie  
Joint**

**ØA  
Tremie  
Joint**

**ØA  
Tremie  
Joint**

**ØA  
Tremie  
Joint**

**ØA  
Tremie  
Joint**

**ØA  
Tremie  
Joint**

mm

mm

mm

mm

mm

mm

254

219

204

219

193.7

187

298.5

250

242.5

244.5

219

212.5

310

273

260

273

250

244.6

Other dimensions are available on request

Other dimensions are available on request

**ØA**

**Weight  
for  
L=1m**

**Weight  
for  
additional  
meter**

**ØA**

**Weight  
for  
L=1m**

**Weight  
for  
additional  
meter**

mm

kg

kg

mm

kg

kg

254

40

22

219

32

17

298.5

48

25

244.5

40

22

310

65

35

273

55

35



---

**IDE** *International Drilling Equipment, Inc.*  
645 Angus Street  
Rural Hall, NC 27045  
p 877-207-6062  
f 866-710-3842  
IDEDRILL.com