

THE HYDRAULIC PILING RIG



FOUNDATION EQUIPMENT





TRADITION _____ _____ OF PROGRESS



Casagrande is approaching very rapidly **60 years of history**. We are part of the foundation engineering world to which we have contributed throughout the years. A benchmark for all and a reference for the industry, our tradition together with progress has been our mission.

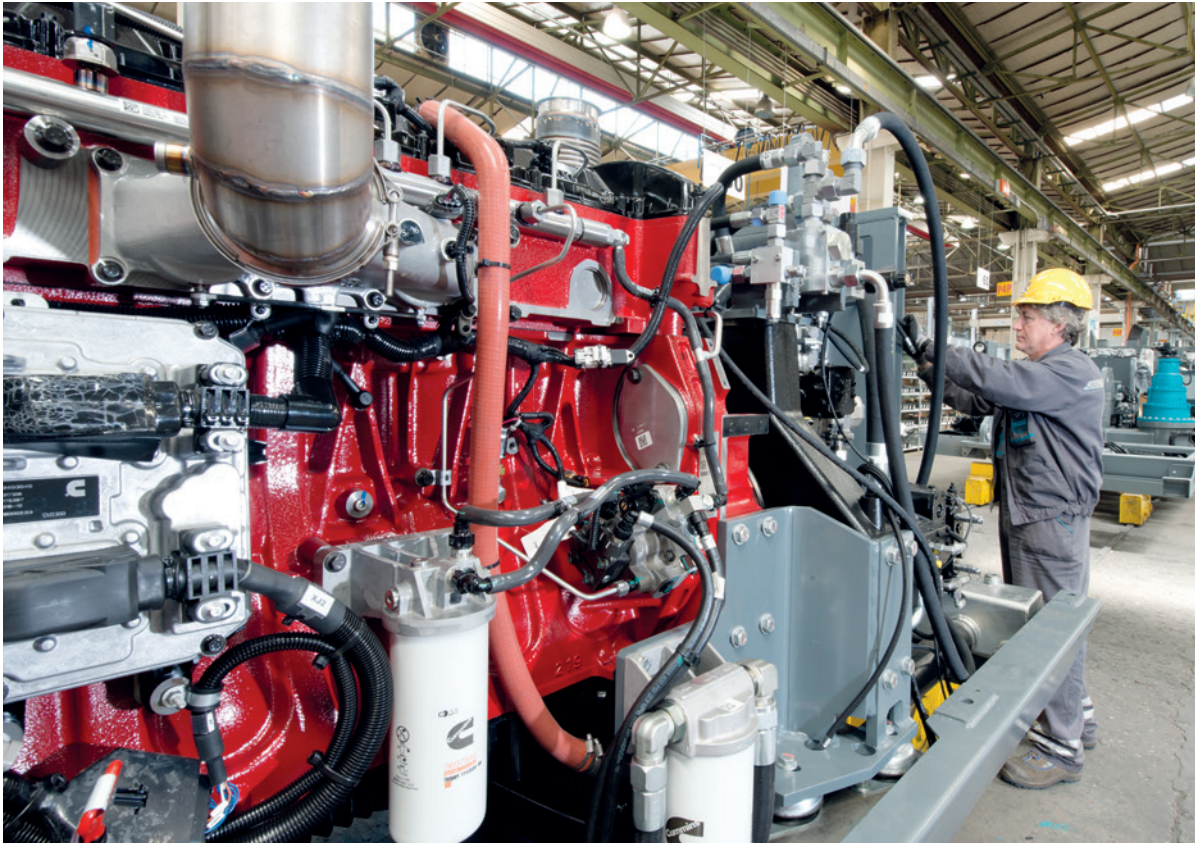
The factory located in northern Italy employs highly qualified personnel which guarantees quality products.

From the choice of high tensile steel the use of quality components sourced from the major world-renowned manufacturers always having the ultimate objective of providing the **best quality rig available in the market**.

To ensure safety and reliability the all Casagrande drill rigs are designed and manufactured according to the new European Standards **EN 16228**.

To further enhance and guarantee such manufacturing philosophy Casagrande works accordingly **ISO 9001:2015 Quality Standard**





XP CONCEPT _____

The **XP** extra power and performance concept is the result of Casagrande's years of expertise and experience, complemented by cutting-edge engineering solutions, **dedicated electronics and innovative design.**

Improved performance, widespread efficiency, flexibility strong attention to safety. The **XP-2** is the next step in the evolution and applies to all Casagrande rigs.

XP-2 concept applies
to all range of Casagrande
equipment granting
extra power and performance





LONG LIFE _____ _____ EQUIPMENT



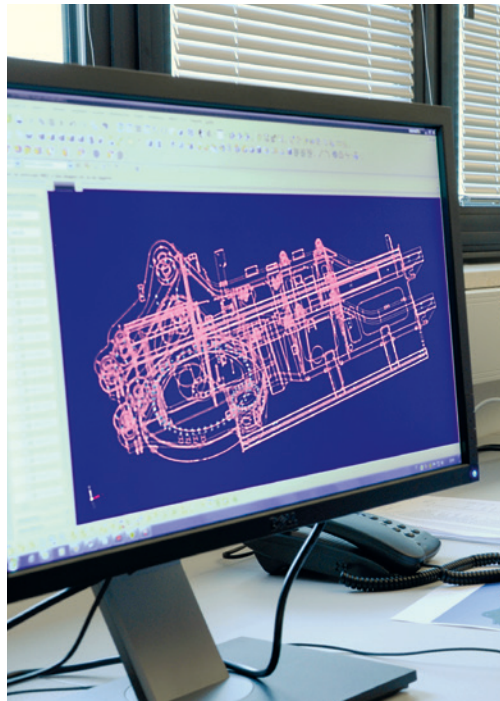
Casagrande design policy is to develop durable equipment.



From the choice of steel to quality world first class components this to provide long lasting and reliable equipment.



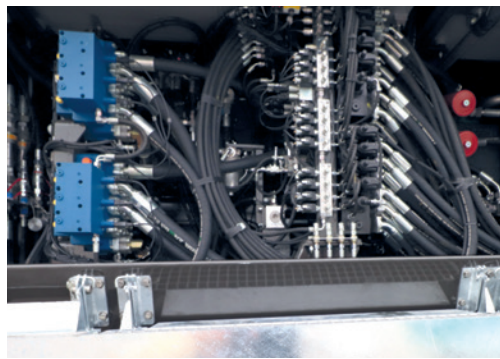
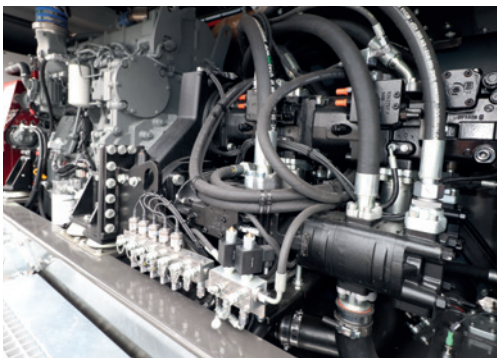
The rig will maintain its high value in time and as well its performance allowing the contractor to always get the best out of the Casagrande product.



EFFICIENCY _____ _____ AND CONTROL

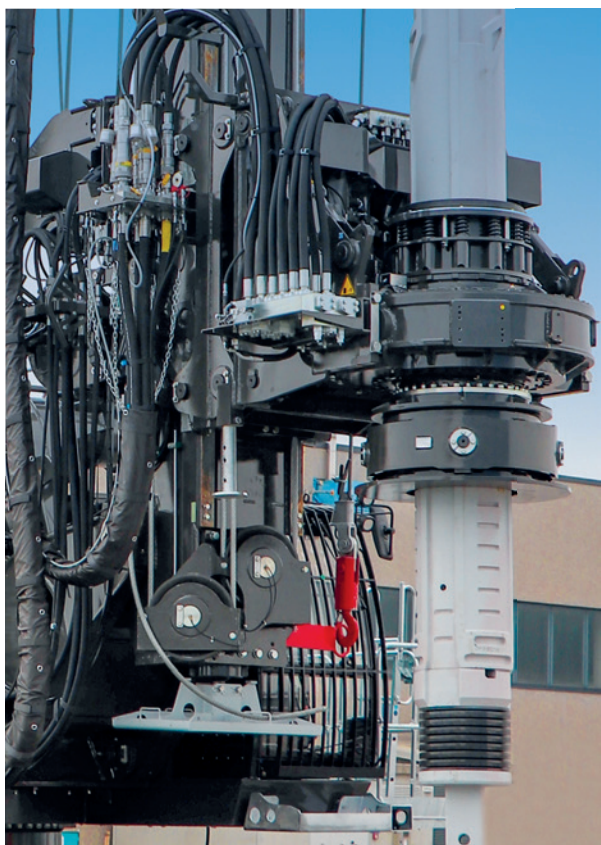
The XP-2 concept applies to the hydraulic and electronic system which controls the **best performance** of the hydraulic pumps so to achieve efficient, precise and rapid execution of all operations.

The powerful and low emission diesel engine transfers the required power to the latest generation of hydraulic pumps, whilst ensuring reduced pollutant emissions and **minimal fuel consumption**.



The hydraulic system layout, combined with specific chosen **components optimizes efficiency** leading to reduced load losses and fuel consumption.

RELIABILITY _____ ____ AND PERFORMANCE



The **Smart Power Management** (SPM) is an intelligent engine power management system that improves performances and consequently productivity of the rig.



The **SPM system monitors** the power flow from the engine and allocates the maximum available energy to the function required by the operator instantaneously, ensuring continuous the maximum power available and its optimum use.

COMFORT _____ ____ AND TECHNOLOGY

“The operator works
in a high tech
and comfortable rig
to improve productivity”

The cabin has been designed with accurate **ergonomics for comfort** and it is soundproofed, always for the operator well being.

Tempered high resistance glasses and FOPS structure protect against ejected and falling objects coming from the drilling process.

High visibility from the operator position thanks to the **wide front, side and top** windows, led lights inside the cab and all around the rig for lighting in the dark.



MAINTENANCE _____ _____ AND SAFETY

“Safety is paramount
together with
easy access
for maintenance”

Access mean, stairs, platforms and railings
provide excellent and safe accessibility to the
engines, hydraulic, electronic systems, winches
for inspection and maintenance.

The bodywork with hydraulic openings gives full
access for easy, quick inspection and maintenance.

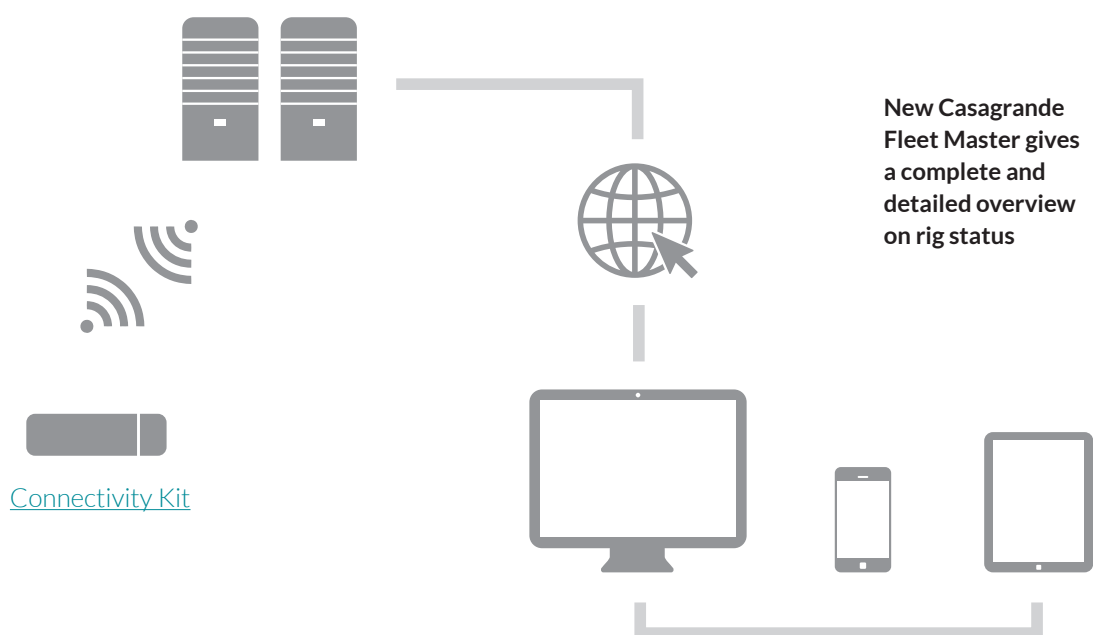
The **monitoring system** gives the operator the
status of the components and of the rig directly
in the operator’s cab.



REMOTE _____ _____ CONNECTION

Casagrande **Fleet Master** is an online platform that allows to remotely monitor your fleet simply and easily via a PC, tablet or mobile phone. You will be able to have a complete and detailed overview of your rig:

- Daily activity, time charts, rig position and status
- Machine and fleet position
- Active alarms and alarm history
- Record of all the significant data
- Hydraulic and electric schematics, user's manual, spare parts

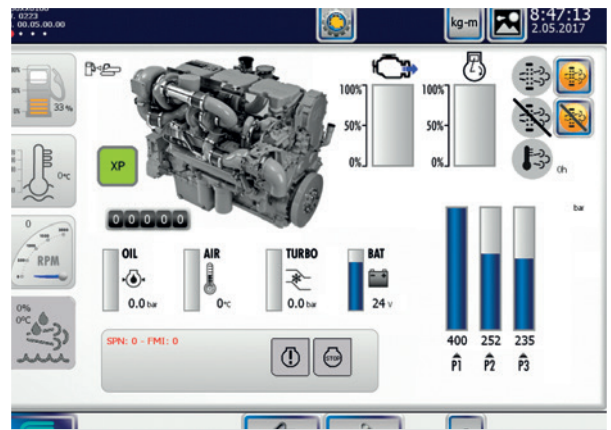
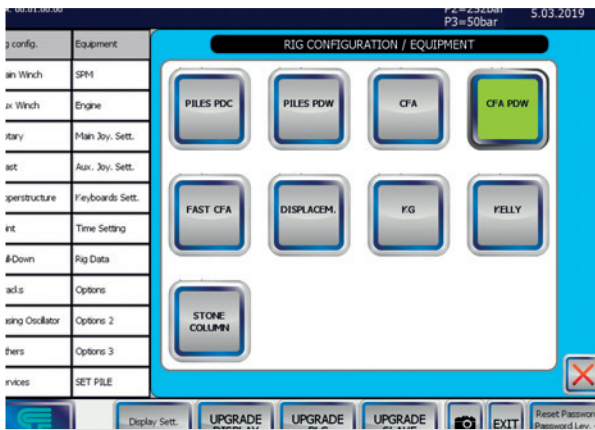


VERSATILITY _____

The **control system** of Casagrande dill rigs allows advantages for the operator in terms of customization and functionality



- Customizable digital screen control by widgets blocks
- Monitoring of all working functions and parameters
- Customization of the working parameters
- Easy conversion to any drilling arrangement using the control system there is no need for manual intervention when changing drilling settings





casagrande
B360 XP

B3

WARNING

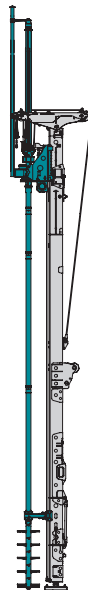
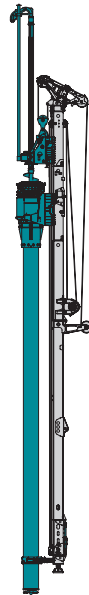
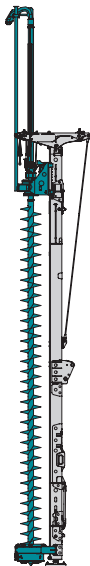
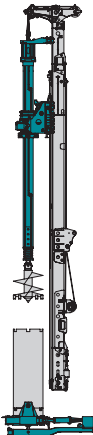
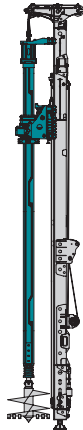
DRILL DEEP  AND GROW



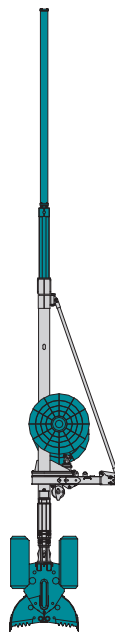
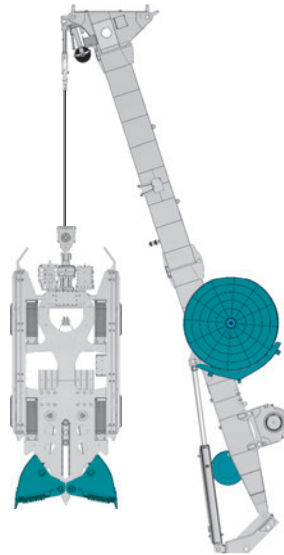
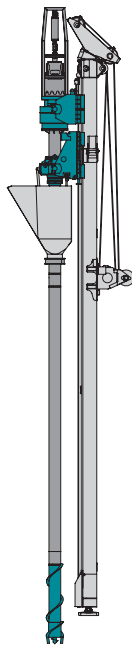
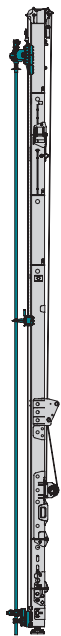
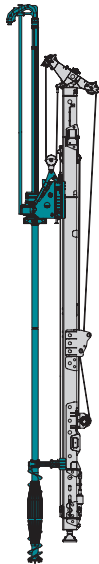
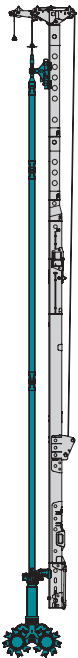
VERSATILE — —— RIGS

In today's foundation techniques **having versatile equipment becomes important**. Casagrande has brought this concept to its best by utilizing the XP-2 concept throughout the whole range of the rigs.

COMPLETE RANGE
OF FOUNDATION TECHNOLOGIES
AVAILABLE



PDC Rotary Drilling PDW Rotary Drilling Casing Oscillator C.F.A. Drilling DH-Cased CFA Piles Soil Mixing



Cutter Soil Mixing Displacement piles Micropiling Jet Grouting Non Vibration Stone Columns KHD Hydraulic Grab KRC Diaphragm wall

EQUIPMENT RANGE

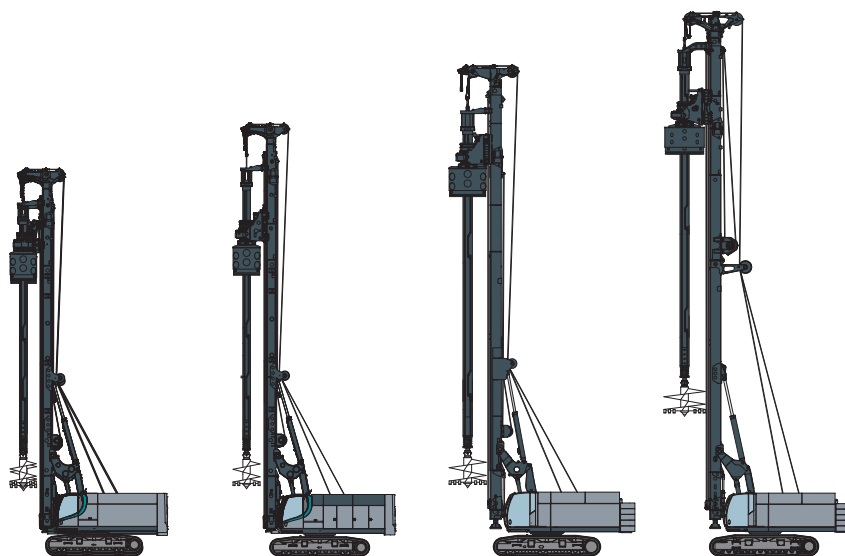
XP

Casagrande provides a wide range of **high-performance equipment**, advanced technology and operation competitiveness. From 30T to 170T satisfying all needs.



Piling Rigs XP-2 series	B125	B160	B175	B200
Torque - kNm	135	160	175	210
Engine Power - kW	186	186	209	246
Weight - t	39	41	42	65

2



Piling Rigs XP-2 series	B250	B275	B300	B360
Torque - kNm	263	300	300	400
Engine Power - kW	336	336	400	400
Weight - t	83	90	102	125



Piling Rigs XP-2 series	B400	B420	B470
Torque - kNm	470	470	470
Engine Power - kW	450	450	450/620
Weight - t	128	140	167

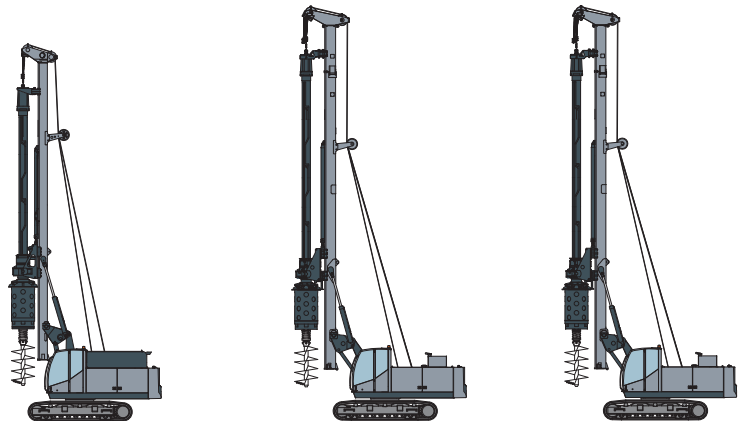
CASAGRANDE CLASSIC LINE

The Casagrande **Classic Rigs**, designed from the tradition to give the specialist contractors an equipment performing foundation techniques in the geotechnical engineering such as bored piles, continuous flight auger and eventually diaphragm wall.

Comfortable cabin and simplified interface keeps the operator efficient and ready for high productivity.



The **hydraulic circuit** and the controls of the machine are based on traditional electro-hydraulic logic elements in order to be as easy as possible. The ideal operating weight allows easy transport and fast set up.



Piling Rigs C-Series	C30	C35	C40
Torque - kNm	125	135	177
Engine Power - kW	164	164	194
Weight - t	35	39	42









Casagrande S.p.A.
Via Malignani, 1
33074 Fontanafredda
Pordenone (Italy)

T. +39 0434 9941
F. +39 0434 997009

info@casagrandegroup.com
www.casagrandegroup.com